

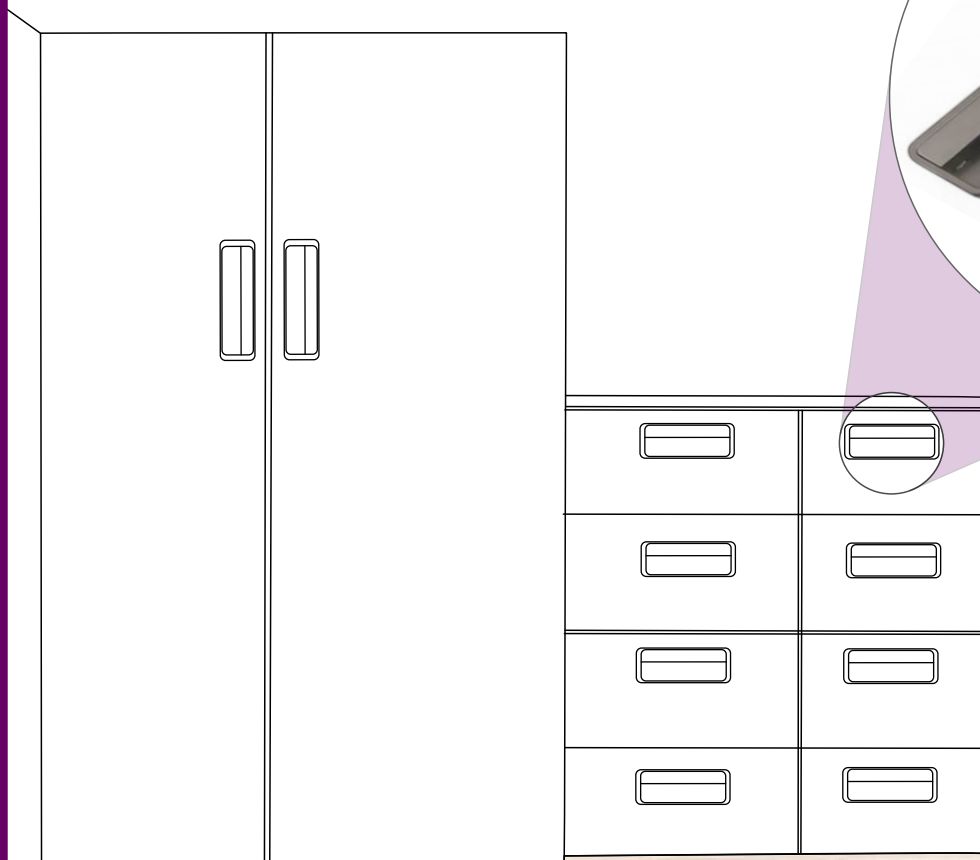
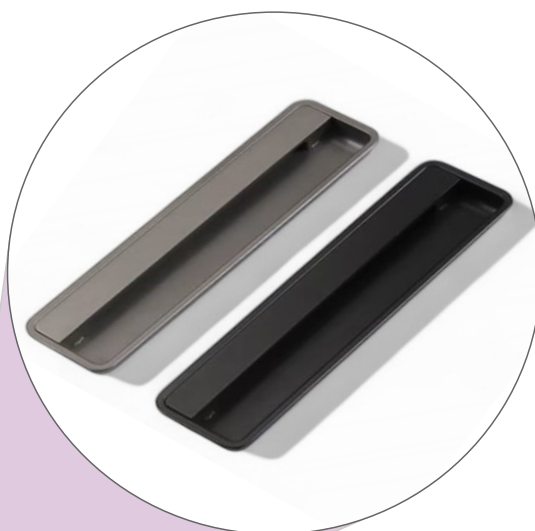


Since 1999

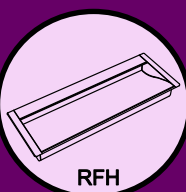


EXCLUSIVE INTERIOR FITTING

**WELCOME TO THE FUTURE OF
INTELLIGENT FURNITURE
HARDWARE & ACCESSORIES**



RECESSED FURNITURE HANDLE



About Us

Our story

KOMAL MANUFACTURING COMPANY HAS BEEN A MAJOR PLAYER IN THE HANDLE INDUSTRY FOR MORE THAN 25 YEARS. THE PIONEER OF THIS BUSINESS WAS MY FATHER MR PRADIP MEHTA UNDER WHOSE GUIDANCE THE COMPANY FLOURISHED AND NOW IT IS KNOWN AS KONARK MANUFACTURING COMPANY. SECOND GENERATION IS RUNNING THIS BUSINESS, THIS MAKES US YOUNG, HIGH ENERGISED AND PROFESSIONAL AND EXTREMELY CUSTOMER ORIENTED.

Management

THE MANAGEMENT TEAM AND THE EMPLOYEES ARE EXPERIENCED IN THEIR AREA. INNOVATING AND INTRODUCING NEW PRODUCTS IS OUR KEY TO BE UNIQUE IN THE MARKET.

WE HAVE AN IN-HOUSE TEAM OF CREATIVE PRODUCT DESIGNERS WHO ARE CONTINUOUSLY WORKING TOWARDS DEVELOPING INNOVATIVE DESIGNS THAT WILL SET NEW TRENDS IN MARKET. THE MANUFACTURING PLANT IS WELL EQUIPED WITH THE LATEST TECHNOLOGY MACHINES AND A TECHNICALLY QUALIFIED TEAM TO MEET THE INCREASING NEEDS OF THE CUSTOMER.

OUR MISSION

WE ARE COMMITTED TO PROVIDE EXCELLENT QUALITY GOODS AND SERVICES TO OUR CUSTOMERS AND TO MEET OUR GOAL, ORGANISATION SHALL STRIVE. EXCELLENT QUALITY OF PRODUCTS, PROMPT AND POSITIVE RESPONSE, ON TIME DELIVERY OF GOODS WITH A MISSION TO MAKE CONTINUAL IMPROVEMENT IN ALL ASPECTS.

OUR AIM

WE IN KONARK BELIEVE TO CREATE AND CULTIVATE LONG TERM RELATIONSHIPS WITH OUR CLIENTS. CUSTOMERS HAVE THE POWER TO CHOOSE IN THIS COMPETITIVE AND OPEN MARKET.

OUR AIM IS TO PROVIDE HIGH QUALITY SERVICE, ALONG WITH FAIR AND COMPETITIVE PRICING AND THUS OFFERING THE CUSTOMER OPTIMAL RETURN ON INVESTMENT.

FOUNDER AND CEO

AS THE FOUNDER OF KONARK MANUFACTURING COMPANY, MR CHETAN IS RESPONSIBLE FOR RUNNING ALL FACETS OF THE BUSINESS. HE IS A VISIONARY THINKER WITH GLOBAL PERSPECTIVE AND ENTREPRENEURIAL DRIVE. HE HAS AN EXPERIENCE OF OVER 20 YEARS IN THIS FIELD.

AS A MECHANICAL ENGINEER HIMSELF HE IS IN DEPTH INVOLVED WITH ALL THE ASPECTS OF MANUFACTURING. DEVELOPING A COMPREHENSIVE MARKETING PLAN AND IMPLEMENTING IT TO INCREASE BRAND AWARENESS AND RECOGNITION. ESTABLISHED A NETWORK OF LOCAL SUPPLIERS FOR EFFICIENT SOURCING OF MATERIALS.



ATTRACTIVE
FINISH



WEATHER PROTECTED
PLATING



VIRGIN MATERIAL



SENSIBLE DESIGN



VARIOUS PATTERN



EASY TO CLEAN



CORROSION
RESISTANCE



FOCUS ON
INNOVATION



SCRATCH
RESISTANCE

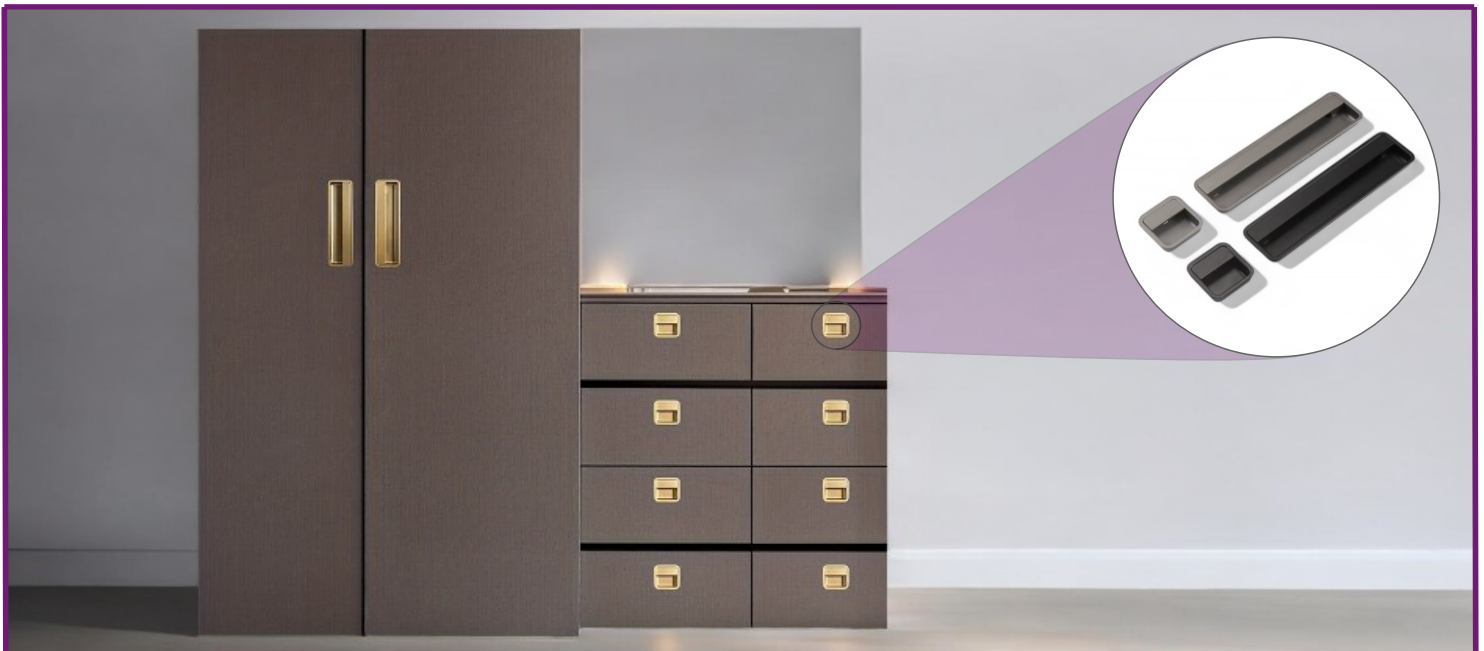


FINGERPRINT
RESISTANCE



OLEOPHOBIC
COATING

RECESSED FURNITURE HANDLE



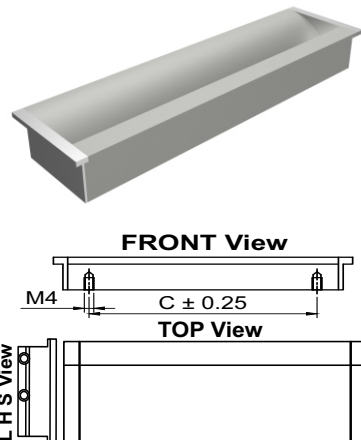
RECESSED FURNITURE HANDLE



Model : RFH-001

Material: Aluminium

Size	Product Code	C
64mm	RFH-001 64	64
96mm	RFH-001 96	96
128mm	RFH-001 128	128
160mm	RFH-001 160	160
192mm	RFH-001 192	192
224mm	RFH-001 224	224

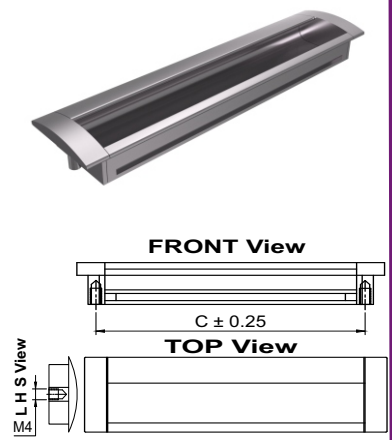


[Customisation In Length Is Possible.]

Model : RFH-002

Material: Aluminium

Size	Product Code	C
64mm	RFH-002 64	64
96mm	RFH-002 96	96
128mm	RFH-002 128	128
160mm	RFH-002 160	160
192mm	RFH-002 192	192
224mm	RFH-002 224	224

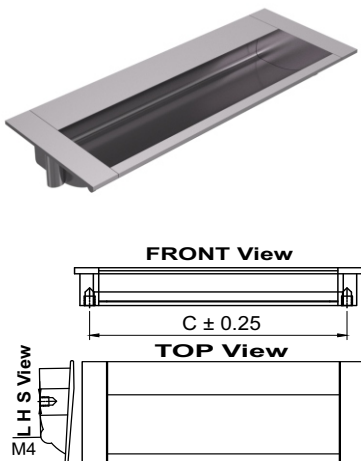


[Customisation In Length Is Possible.]

Model : RFH-003

Material: Aluminium

Size	Product Code	C
64mm	RFH-003 64	64
96mm	RFH-003 96	96
128mm	RFH-003 128	128
160mm	RFH-003 160	160
192mm	RFH-003 192	192
224mm	RFH-003 224	224

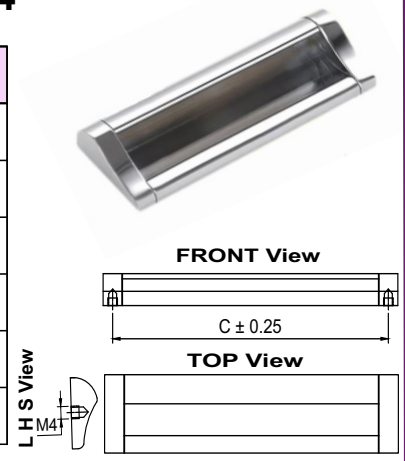


[Customisation In Length Is Possible.]

Model : RFH-004

Material: Aluminium

Size	Product Code	C
64mm	RFH-004 64	64
96mm	RFH-004 96	96
128mm	RFH-004 128	128
160mm	RFH-004 160	160
192mm	RFH-004 192	192
224mm	RFH-004 224	224

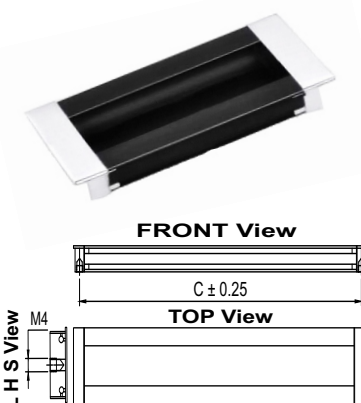


[Customisation In Length Is Possible.]

Model : RFH-005

Material: Aluminium

Size	Product Code	C
64mm	RFH-005 64	64
96mm	RFH-005 96	96
128mm	RFH-005 128	128
160mm	RFH-005 160	160
192mm	RFH-005 192	192
224mm	RFH-005 224	224

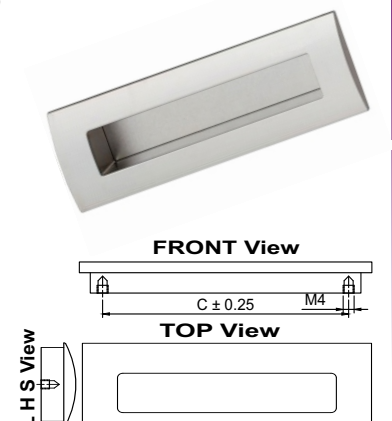


[Customisation In Length Is Possible.]

Model : RFH-006

Material: Aluminium

Size	Product Code	C
64mm	RFH-006 64	64
96mm	RFH-006 96	96
128mm	RFH-006 128	128
160mm	RFH-006 160	160



[Customisation In Length Is Possible.]

FINISH:

MT	CP	SP	MC	BM	RG	BA	CA
Matt	Chrome	Satin	Matt Chrome	Black Matt	Rose Gold	Brass Antique	Copper Antique

[★ Best Sellers]

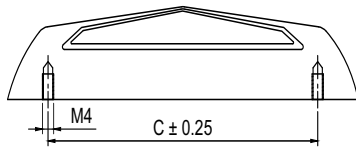
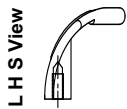
RECESSED FURNITURE HANDLE



Model : RFH-007

Material: Zinc

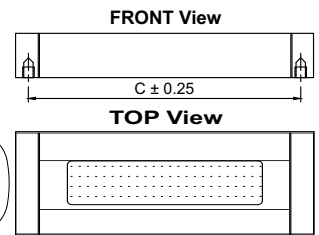
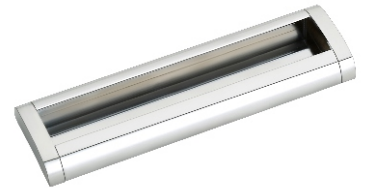
Size	Product Code	C
96mm	RFH-007 96	96
160mm	RFH-007 160	160
224mm	RFH-007 224	224



Model : RFH-008

Material: Aluminium

Size	Product Code	C
96mm	RFH-008 96	96
128mm	RFH-008 128	128
160mm	RFH-008 160	160
192mm	RFH-008 192	192
224mm	RFH-008 224	224

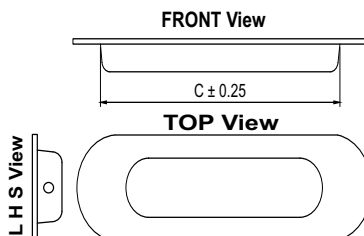


[Customisation In Length Is Possible.]

Model : RFH-009

Material: Steel

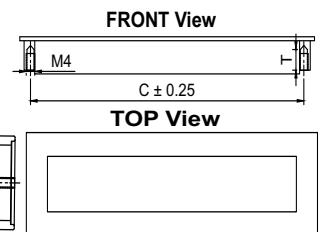
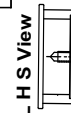
Size	Product Code
4"	RFH-009 4"
6"	RFH-009 6"
8"	RFH-009 8"
10"	RFH-009 10"
12"	RFH-009 12"



Model : RFH-010

Material: Zinc

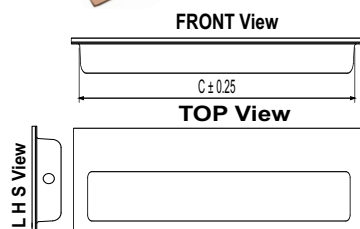
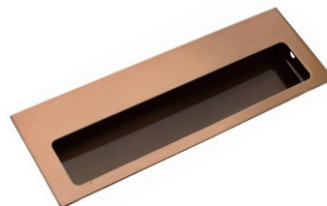
Size	Product Code	C
96mm	RFH-010 96	96
128mm	RFH-010 128	128
160mm	RFH-010 160	160
192mm	RFH-010 192	192
224mm	RFH-010 224	224



Model : RFH-011

Material: Steel

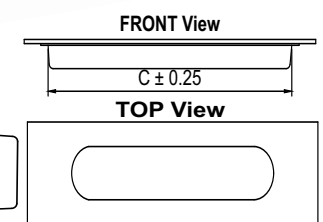
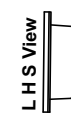
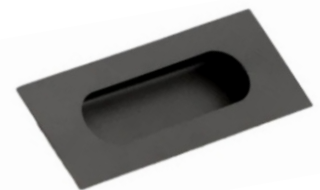
Size	Product Code
4"	RFH-011 4"
6"	RFH-011 6"
8"	RFH-011 8"
10"	RFH-011 10"
12"	RFH-011 12"



Model : RFH-012

Material: Steel

Size	Product Code
4"	RFH-012 4"
6"	RFH-012 6"
8"	RFH-012 8"
10"	RFH-012 10"
12"	RFH-012 12"



FINISH:



Matt



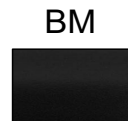
Chrome



Satin



Matt Chrome



Black Matt



Rose Gold



Brass Antique



Copper Antique

[★ Best Sellers]

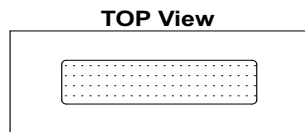
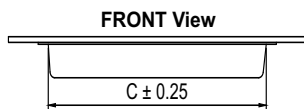
RECESSED FURNITURE HANDLE



Model : RFH-013

Material: Steel

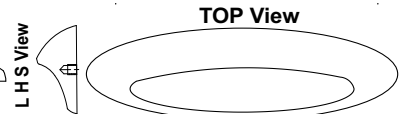
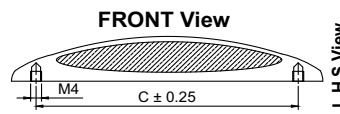
Size	Product Code
96mm	RFH-013 96
128mm	RFH-013 128
160mm	RFH-013 160
224mm	RFH-013 224



Model : RFH-014

Material: Zinc

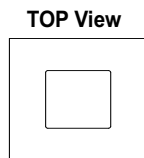
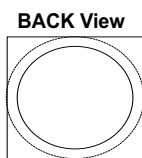
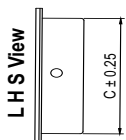
Size	Product Code	C
96mm	RFH-014 96	96
128mm	RFH-014 128	128
160mm	RFH-014 160	160



Model : RFH-015

Material: Steel

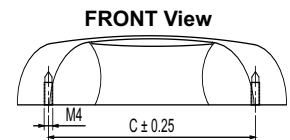
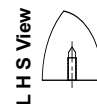
Size	Product Code
2"	RFH-015 2"
2.5"	RFH-015 2.5"
3"	RFH-015 3"



Model : RFH-016

Material: Zinc

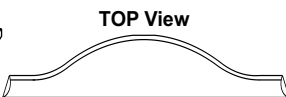
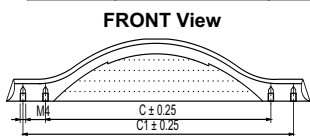
Size	Product Code	C
96mm	RFH-016 96	96
160mm	RFH-016 160	160
224mm	RFH-016 224	224



Model : RFH-017

Material: Zinc

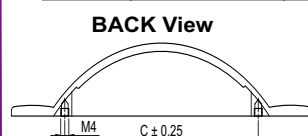
Size	Product Code	C
96mm	RFH-017 96	96
160mm	RFH-017 160	160
224mm	RFH-017 224	224



Model : RFH-018

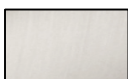
Material: Zinc

Size	Product Code	C
96mm	RFH-018 96	96
160mm	RFH-018 160	160
224mm	RFH-018 224	224



FINISH:

MT



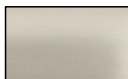
Matt

CP



Chrome

SP



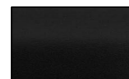
Satin

MC



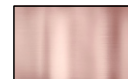
Matt Chrome

BM



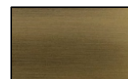
Black Matt

RG



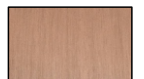
Rose Gold

BA



Brass Antique

CA



Copper Antique

[★ Best Sellers]

RECESSED FURNITURE HANDLE



Material: Zinc

Model : RFH-019

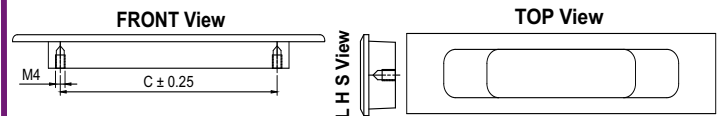
Size	Product Code	C
96mm	RFH-019 96	96
128mm	RFH-019 128	128
160mm	RFH-019 160	160
224mm	RFH-019 224	224



Material: Zinc

Model : RFH-020

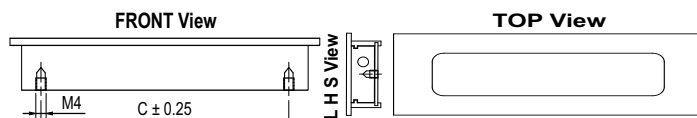
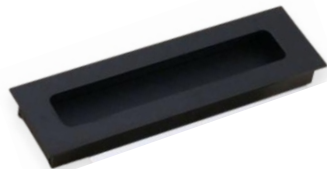
Size	Product Code	C
96mm	RFH-020 96	96
160mm	RFH-020 160	160
224mm	RFH-020 224	224



Material: Aluminium

Model : RFH-021

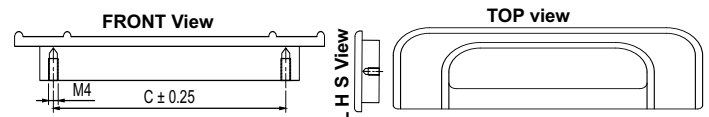
Size	Product Code	C
96mm	RFH-021 96	96
128mm	RFH-021 128	128
160mm	RFH-021 160	160
224mm	RFH-021 224	224



Material: Zinc

Model : RFH-022

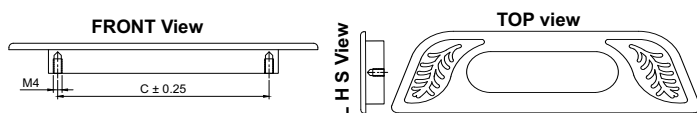
Size	Product Code	C
96mm	RFH-020 96	96
160mm	RFH-020 160	160
224mm	RFH-020 224	224



Material: Zinc

Model : RFH-023

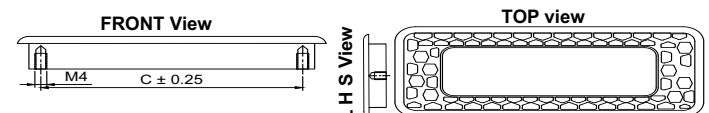
Size	Product Code	C
96mm	RFH-020 96	96
160mm	RFH-020 160	160
224mm	RFH-020 224	224



Material: Zinc

Model : RFH-024

Size	Product Code	C
96mm	RFH-020 96	96
160mm	RFH-020 160	160
224mm	RFH-020 224	224



FINISH:

MT	CP	SP	MC	BM	RG	BA	CA
Matt	Chrome	Satin	Matt Chrome	Black Matt	Rose Gold	Brass Antique	Copper Antique

[★ Best Sellers]

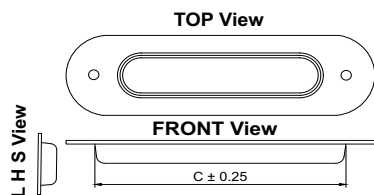
RECESSED FURNITURE HANDLE



Model : RFH-025

Material: Steel

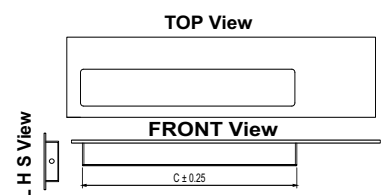
Size	Product Code
4"	RFH-025 4"
6"	RFH-025 6"
8"	RFH-025 8"
10"	RFH-025 10"
12"	RFH-025 12"



Model : RFH-026

Material: Steel

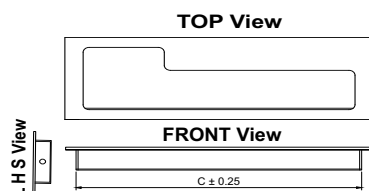
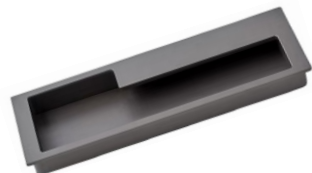
Size	Product Code
4"	RFH-026 4"
6"	RFH-026 6"
8"	RFH-026 8"
10"	RFH-026 10"
12"	RFH-026 12"



Model : RFH-027

Material: Steel

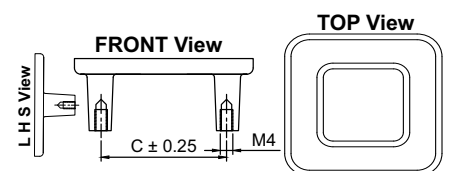
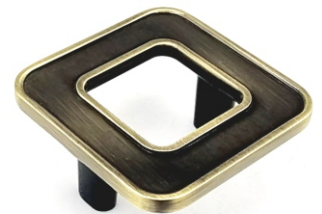
Size	Product Code
4"	RFH-027 4"
6"	RFH-027 6"
8"	RFH-027 8"
10"	RFH-027 10"
12"	RFH-027 12"



Model : RFH-028

Material: Zinc

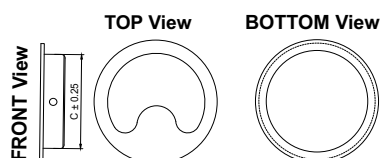
Size	Product Code	C
40mm	RFH-061 40	40



Model : RFH-029

Material: Steel

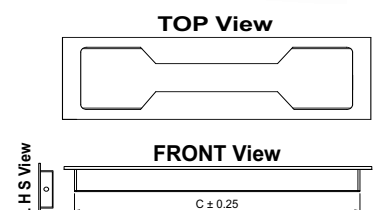
Size	Product Code
2"	RFH-029 2"
2.5"	RFH-029 2.5"
3"	RFH-029 3"



Model : RFH-030

Material: Steel

Size	Product Code
4"	RFH-030 4"
6"	RFH-030 6"
8"	RFH-030 8"
10"	RFH-030 10"
12"	RFH-030 12"



FINISH:

MT	CP	SP	MC	BM	RG	BA	CA
Matt	Chrome	Satin	Matt Chrome	Black Matt	Rose Gold	Brass Antique	Copper Antique

[★ Best Sellers]

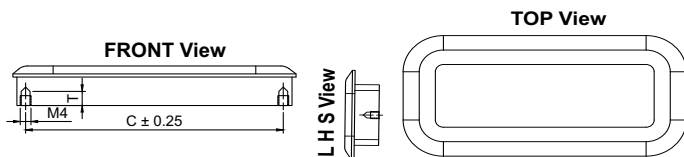
RECESSED FURNITURE HANDLE



Model : RFH-031

Material: Zinc

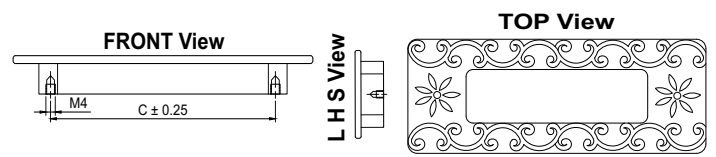
Size	Product Code	C
96mm	RFH-031 96	96
128mm	RFH-031 128	128
224mm	RFH-031 224	224



Model : RFH-032

Material: Zinc

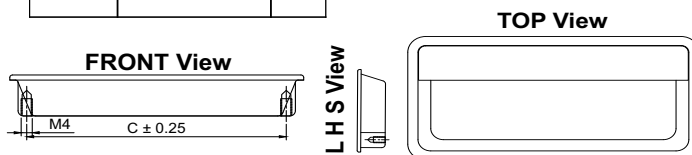
Size	Product Code	C
96mm	RFH-032 96	96
160mm	RFH-032 160	160
224mm	RFH-032 224	224



Model : RFH-033

Material: Zinc

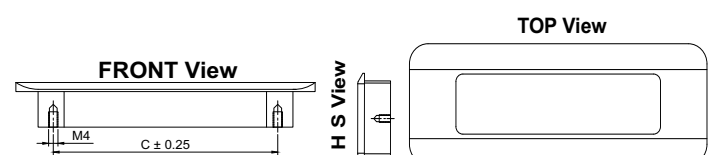
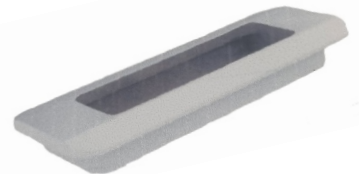
Size	Product Code	C
32mm	RFH-033 32	32
96mm	RFH-033 96	96
160mm	RFH-033 160	160
224mm	RFH-033 224	224



Model : RFH-034

Material: Zinc

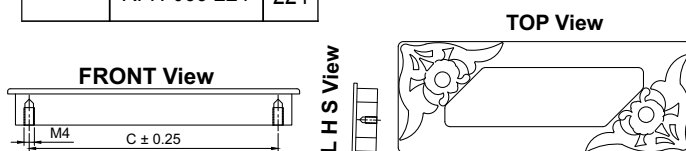
Size	Product Code	C
96mm	RFH-034 96	96
160mm	RFH-034 160	160
224mm	RFH-034 224	224



Model : RFH-035

Material: Zinc

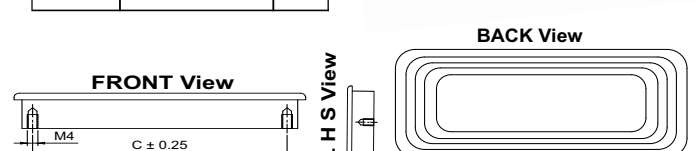
Size	Product Code	C
96mm	RFH-035 96	96
160mm	RFH-035 160	160
224mm	RFH-035 224	224



Model : RFH-036

Material: Zinc

Size	Product Code	C
96mm	RFH-036 96	96
160mm	RFH-036 160	160
224mm	RFH-036 224	224



FINISH:

MT	CP	SP	MC	BM	RG	BA	CA
Matt	Chrome	Satin	Matt Chrome	Black Matt	Rose Gold	Brass Antique	Copper Antique

[★ Best Sellers]

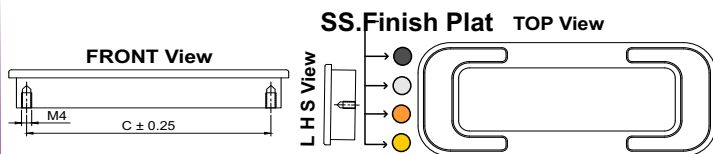
RECESSED FURNITURE HANDLE



Model : RFH-037

Material: Zinc

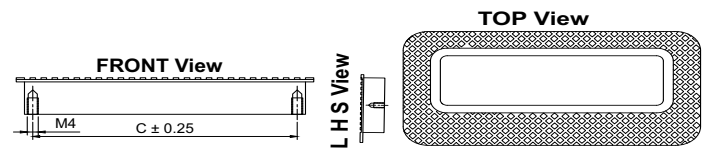
Size	Product Code	C
96mm	RFH-037 96	96
160mm	RFH-037 160	160
224mm	RFH-037 224	224



Model : RFH-038

Material: Zinc

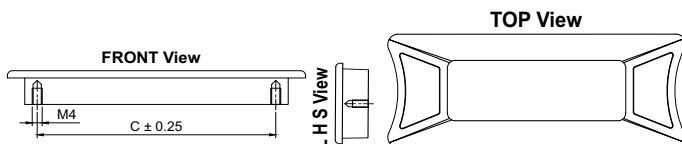
Size	Product Code	C
96mm	RFH-038 96	96
160mm	RFH-038 160	160
224mm	RFH-038 224	224



Model : RFH-039

Material: Zinc

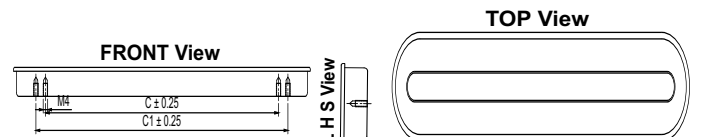
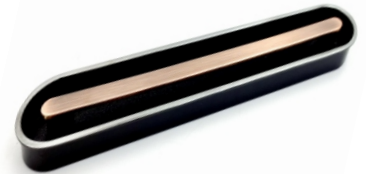
Size	Product Code	C
96mm	RFH-039 96	96
160mm	RFH-039 160	160
224mm	RFH-039 224	224



Model : RFH-040

Material: Zinc

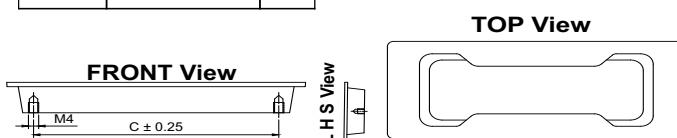
Size	Product Code	C
96mm	RFH-040 96	96
160mm	RFH-040 160	160
224mm	RFH-040 224	224



Model : RFH-041

Material: Zinc

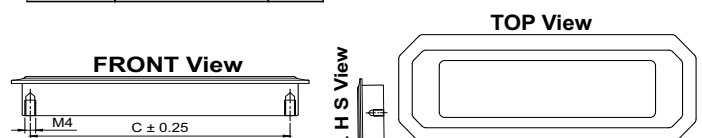
Size	Product Code	C
96mm	RFH-041 96	96
160mm	RFH-041 160	160
224mm	RFH-041 224	224



Model : RFH-042

Material: Zinc

Size	Product Code	C
96mm	RFH-042 96	96
160mm	RFH-042 160	160
224mm	RFH-042 224	224



FINISH:

MT	CP	SP	MC	BM	RG	BA	CA
Matt	Chrome	Satin	Matt Chrome	Black Matt	Rose Gold	Brass Antique	Copper Antique

[★ Best Sellers]

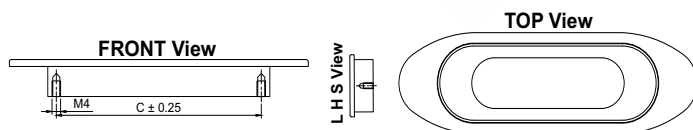
RECESSED FURNITURE HANDLE



Model : RFH-043

Material: Zinc

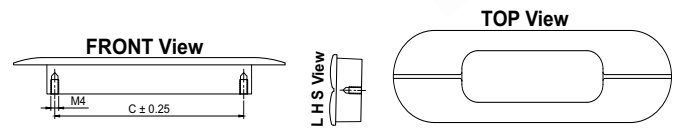
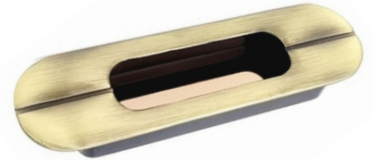
Size	Product Code	C
96mm	RFH-043 96	96
160mm	RFH-043 160	160
224mm	RFH-043 224	224



Model : RFH-044

Material: Zinc

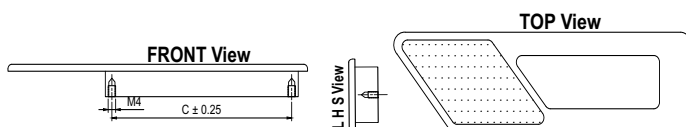
Size	Product Code	C
96mm	RFH-044 96	96
160mm	RFH-044 160	160
224mm	RFH-044 224	224



Model : RFH-045

Material: Zinc

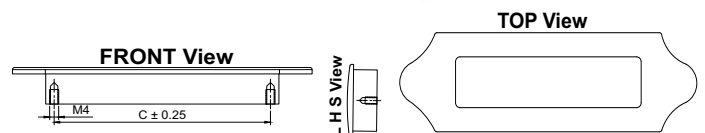
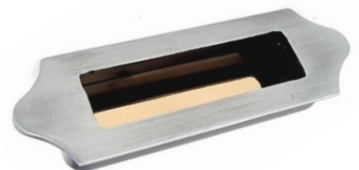
Size	Product Code	C
96mm	RFH-045 96	96
160mm	RFH-045 160	160
224mm	RFH-045 224	224



Model : RFH-046

Material: Zinc

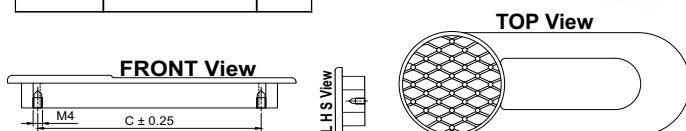
Size	Product Code	C
96mm	RFH-046 96	96
160mm	RFH-046 160	160
224mm	RFH-046 224	224



Model : RFH-047

Material: Zinc

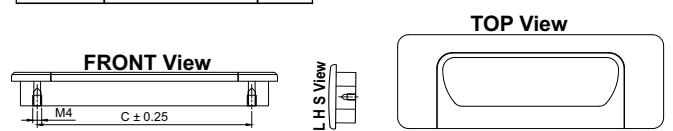
Size	Product Code	C
96mm	RFH-047 96	96
160mm	RFH-047 160	160
224mm	RFH-047 224	224



Model : RFH-048

Material: Zinc

Size	Product Code	C
96mm	RFH-048 96	96
160mm	RFH-048 160	160
224mm	RFH-048 224	224



FINISH:

MT	CP	SP	MC	BM	RG	BA	CA
Matt	Chrome	Satin	Matt Chrome	Black Matt	Rose Gold	Brass Antique	Copper Antique

[★ Best Sellers]

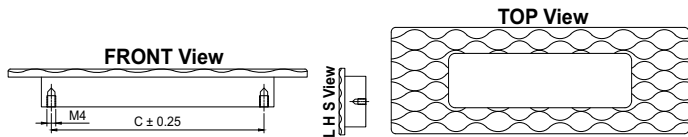
RECESSED FURNITURE HANDLE



Model : RFH-049

Material: Zinc

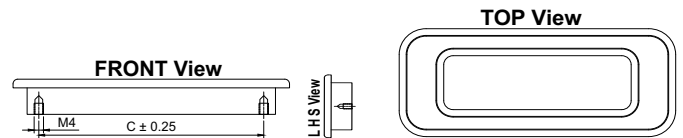
Size	Product Code	C
96mm	RFH-049 96	96
160mm	RFH-049 160	160
224mm	RFH-049 224	224



Model : RFH-050

Material: Zinc

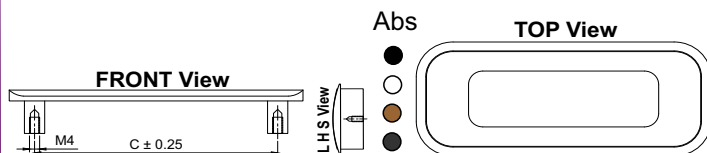
Size	Product Code	C
96mm	RFH-050 96	96
160mm	RFH-050 160	160
224mm	RFH-050 224	224



Model : RFH-051

Material: Zinc

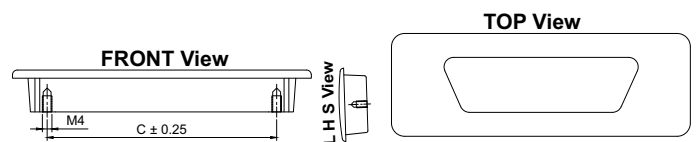
Size	Product Code	C
96mm	RFH-051 96	96
160mm	RFH-051 160	160
224mm	RFH-051 224	224



Model : RFH-052

Material: Zinc

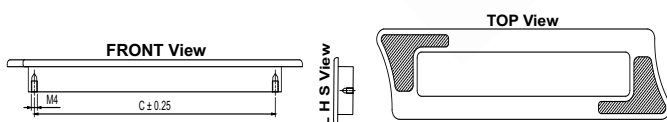
Size	Product Code	C
96mm	RFH-052 96	96
160mm	RFH-052 160	160
224mm	RFH-052 224	224



Model : RFH-053

Material: Zinc

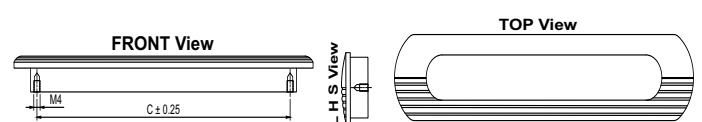
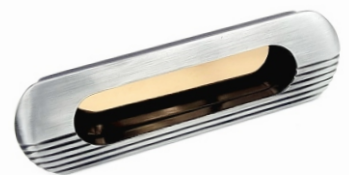
Size	Product Code	C
96mm	RFH-053 96	96
160mm	RFH-053 160	160
224mm	RFH-053 224	224



Model : RFH-054

Material: Zinc

Size	Product Code	C
96mm	RFH-054 96	96
160mm	RFH-054 160	160
224mm	RFH-054 224	224



FINISH:

MT	CP	SP	MC	BM	RG	BA	CA
Matt	Chrome	Satin	Matt Chrome	Black Matt	Rose Gold	Brass Antique	Copper Antique

[★ Best Sellers]

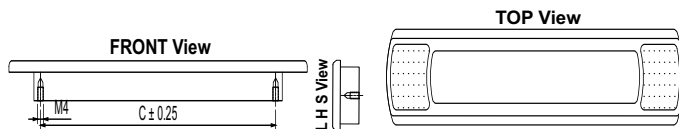
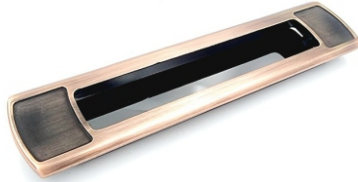
RECESSED FURNITURE HANDLE



Model : RFH-055

Material: Zinc

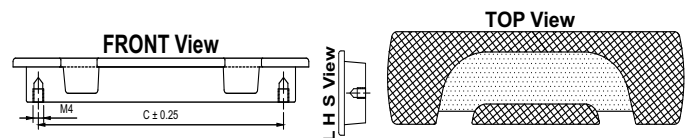
Size	Product Code	C
96mm	RFH-055 96	96
160mm	RFH-055 160	160
224mm	RFH-055 224	224



Model : RFH-056

Material: Zinc

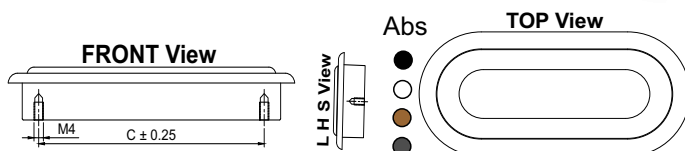
Size	Product Code	C
96mm	RFH-056 96	96
160mm	RFH-056 160	160
224mm	RFH-056 224	224



Model : RFH-057

Material: Zinc

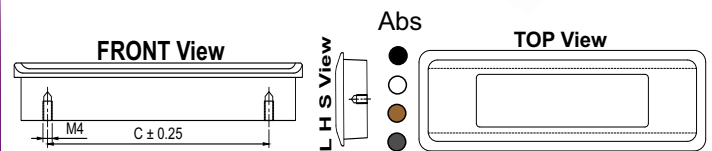
Size	Product Code	C
96mm	RFH-057 96	96
160mm	RFH-057 160	160
224mm	RFH-057 224	224



Model : RFH-058

Material: Zinc

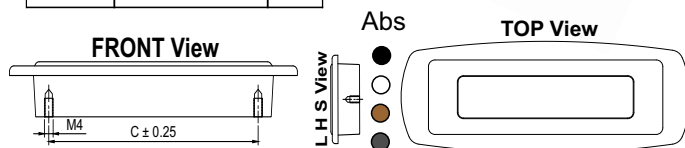
Size	Product Code	C
96mm	RFH-058 96	96
160mm	RFH-058 160	160
224mm	RFH-058 224	224



Model : RFH-059

Material: Zinc

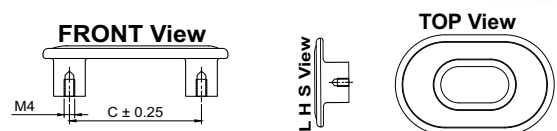
Size	Product Code	C
96mm	RFH-059 96	96
160mm	RFH-059 160	160
224mm	RFH-059 224	224



Model : RFH-060

Material: Zinc

Size	Product Code	C
50mm	RFH-060 50	50



FINISH:

MT	CP	SP	MC	BM	RG	BA	CA
Matt	Chrome	Satin	Matt Chrome	Black Matt	Rose Gold	Brass Antique	Copper Antique

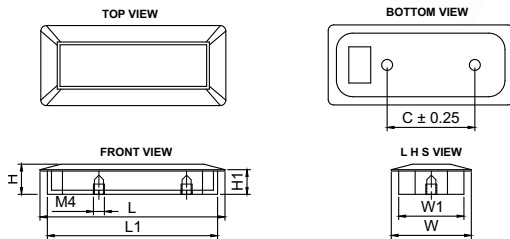
[★ Best Sellers]

RECESSED FURNITURE HANDLE



Model : RFH-061

Size	Product Code	C
32mm	RFH-061 32	32



FINISH:

MT	CP	SP	MC	BM	RG	BA	CA
Matt	Chrome	Satin	Matt Chrome	Black Matt	Rose Gold	Brass Antique	Copper Antique

[★ Best Sellers]

Terms & Conditions

1- DISCLAIMER

Manufacturing Agency reserves the right to discontinue or add any product, finish or design without prior notice. The sketches/drawings and images appearing in this price list have been included solely for guidance purposes only. They are not true to scale and do not represent any precise or binding design of the product. Copying or Duplicating the products is strictly prohibited. Only authorized resellers, franchise & distributors appointed by the company are allowed to possess, trade or sell products offered by and from the company. Illegal possession of the goods will result in prosecution.

2- AVAILABILITY

Manufacturing Agency endeavours to keep sufficient stock of the products mentioned in this price list. But orders falling out of average, if not in stock, would be intimated and supplied in due course as specified or agreed by customers in written. Manufacturing Agency requests customers to reconfirm stock position before commitment to the customers.

3- PRICES

All previous prices are superseded by this List Price along with price agreements of any kind with any party. All prices are subject to change without notice. All prices mentioned are Maximum Retail Prices (M.R.P.) i.e. inclusive of all taxes for the end user. All prices are Ex-works and in Indian Rupees (INR) only. The validity period of the price list also applies in case of products that are not included in this price list. All the information provided is subject to error and printing mistakes for which no liability will be accepted.

4- TAX & FREIGHT

Packing, Forwarding & Bardan Charges have to be borne by the buyer. CGST+SGST for Gujarat and IGST for other states would be applicable after the standard discount on the MRP. Additional Freight charges for prompt deliveries by air i.e. courier or flight charges has to be borne by the buyer along with necessary forms. The Tax rate will be subject to change as per the government notifications.

5- ORDERS

Receipt or Possession of this Price List does not grant approval to quote or purchase Manufacturing Agency Products. All orders will be fulfilled by the acceptance of Manufacturing Agency quantity at Manufacturing Agency Price at the time of order. Manufacturing Agency will accept orders via phone, email, fax, sms or courier. Manufacturing Agency reserves the right to decline orders in which the price or quantity of goods is not satisfactory. Any modification to the standard product configuration is considered to be a special order. For a special order the price will vary and no credits will be issued for returned special orders unless authorized by the Directors of Manufacturing Agency. Delivery period of such orders will be decided depending upon the manufacturing process time. Accuracy of phone orders will be determined by the receipt of a written sale order form and an acceptance of the same. The order reference issued on the form will be used for tracking the goods.

6- INVOICE

The final dispatch invoice will be sent to you for confirmation just before the dispatch and a written confirmation for the same will be required by you of that invoice. Any changes in the quantity, price or product etc. has to be rectified immediately and the goods will leave the warehouse only after your confirmation. Any changes will not be accepted later.

7- DELIVERY

We endeavor to make prompt shipment of all orders, but we shall not be held responsible for any loss or damage resulting from delay in filling orders due to causes beyond our control, including delivery of material to us. All responsibility ceases off the goods after it has left our warehouse. Goods in transit are at the risk of the buyer.

Terms & Conditions

8- CLAIMS

All claims due to errors or defects must be submitted, in writing, within 15 days after receipt of goods.

9- PROPER INSTALLATION& MAINTENANCE

Improper installations or any unguided product hampering is not a responsibility of Company.

It is the responsibility of the buyer to ensure the fitness of hardware for the intended purpose. We recommend assessment by appropriate testing in the application and by technical enquiry to our representatives or by understanding the manual provided with the product. Products may be sharp edged or blunt and heavy. Please handle with proper handling techniques and please keep all products away from the reach of children during or before installation. Keep the products in good condition and avoid contact with chemicals, water, paste, dirt and abuse to increase the life of the product. Finishes treated with protective coatings quickly deteriorate if the surface is broken. To prolong the life and maintain the original beauty of the material and the finish, it is important to avoid the use of paint removing solvents, acids, ambro tapes or other strong caustic cleaning solutions. Before painting doors, frames & woodwork. All hardware items should be removed and reinstalled after the paint is dry.

10- RETURNED GOODS

Company will not accept any return goods under any circumstances except manufacturing defects or warehouse mistakes. Customer has up to 6 Months from the date of invoice to return the goods in this case and all goods must be returned in original packaging and be in resalable condition, i.e. unaltered and non-degraded condition along with prior approval. Transportation charges of returned goods must be prepaid by the customer. Product not returned in saleable condition or after 6 Month of issue date is subject to disposal by Company with no credit issued.





Exclusive Interior Fittings.

MADE IN INDIA

MADE FOR WORLD

Mfg. By :

Komal
Manufacturing Co.

Factory Add: Plot No.27 Survey No.224,
Somnath Ind.5, Village:Kothariya,
Gondal Road, Rajkot, 360022.

Mkt.& Dist. By :

Konark
Manufacturing Co.

Office Add: 11/D-502,Neelam Nagar,Phase-2,
Gavan Pada,Mulund (E) Mumbai-400081



www.konark8.com



info@konark8.com



+916357707700

E-mail : chetan@konark8.com
Contact Person : [Chetan Mehta](#)
Contact : [+91-7878757399](tel:+91-7878757399)



MADE IN INDIA
MADE FOR WORLD

